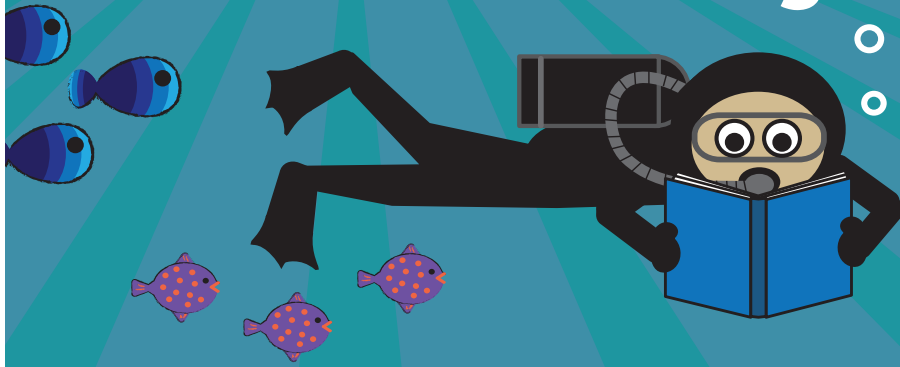


# Dive into Reading!



## The SchoolForce Reading Power Read-a-thon

January 18<sup>th</sup> to  
February 1<sup>st</sup>, 2019

## Read-a-thon Instructions



### January 18<sup>th</sup>

Look through your Reading Power packet which contains a reading log, pledge form and instructions.



### January 18<sup>th</sup> to February 1<sup>st</sup>

Log the minutes you spend reading every day, doing your best to reach your total minute goal. Ask friends, neighbors, and family members to sponsor you by donating money for the time you spend reading. The money you raise will help fund valuable programs at your school.



### February 1<sup>st</sup> to February 8<sup>th</sup>

Tally up your reading log and collect your donations. Attach online donation printouts to your pledge form. Return the reading log, pledge form and donations to your teacher or school office in your Reading Power envelope.

**Your contribution makes a  
BIG difference to our schools!**

**Did you know?** If every student generates \$150 in donations (that's only three \$50 pledges), we will raise over \$600,000 which will be used to fund vital programs in our schools.

Reading Power is a SchoolForce fundraising event. SchoolForce is the non-profit education foundation that supports the seven schools of the Belmont-Redwood Shores School District. SchoolForce raises money to pay for high quality teachers and educational programs for all students in the district. These include literacy programs, reduced class sizes, science, music, technology, art, sports, deans & counselors and more. Donating to SchoolForce is the only way to help fund these programs in our schools.

Questions? Contact the Reading Power Chairperson at your school.

**Central:** Inga Lapsins, [central\\_rpchair@schoolforce.org](mailto:central_rpchair@schoolforce.org); **Cipriani:** Kendra Orr, [cipriani\\_rpchair@schoolforce.org](mailto:cipriani_rpchair@schoolforce.org); **Fox:** Stephanie Lee, [fox\\_rpchair@schoolforce.org](mailto:fox_rpchair@schoolforce.org);

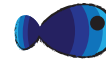
**Nesbit:** Susanna Schubert, [nesbit\\_rpchair@schoolforce.org](mailto:nesbit_rpchair@schoolforce.org);

**RWS Elementary:** Garth Fraser, [rwse\\_rpchair@schoolforce.org](mailto:rwse_rpchair@schoolforce.org);

**Sandpiper:** Deanna Chow, [sandpiper\\_rpchair@schoolforce.org](mailto:sandpiper_rpchair@schoolforce.org)

### Tracking your Progress

Bring your reading log to school on the days designated by your Reading Power Chairperson.



For every 100 minutes you read you'll earn a fish scale or sea creature on your school's read-a-thon display.



Special prizes will be awarded for members of the 1000 Minute Club!

### Lots of Prizes!

For students/classes that turn in a Reading Power packet with at least one donation, you'll be eligible to win:



**Class parties**



**Raffle tickets**



**And so much more!**

**See the list of prizes for  
your school and remember:**

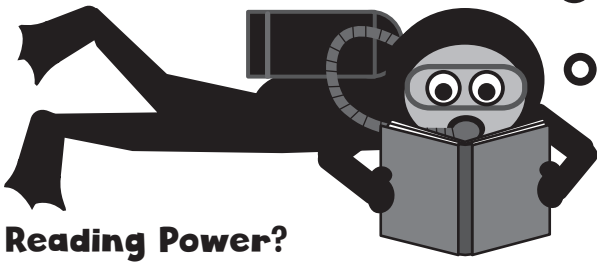
# Have Fun!



**READING POWER**  
A SchoolForce Program



# Reading Power FAQs



## What is Reading Power?

Now in its 15th year, the Reading Power Read-a-thon is a fun two-week event that encourages the love of reading and directly involves all students in the district in fundraising for our schools. Students log the amount of time they read and collect donations from friends and extended family to raise money for their schools. Checks are written to SchoolForce, the Belmont-Redwood Shores Public School Foundation, which is the fundraising organization for the Belmont-Redwood Shores School District.

## When is Reading Power?

The 15th Annual Reading Power Read-a-thon runs from January 18th to February 1st, 2019

## How does it work?

The Read-a-thon Packet, which includes a reading log, pledge form and instruction flyer, will be distributed to students in a large white envelope on the first day of the event. Students record the amount of time they spend reading on their Reading Power reading log each day during the event. (TK/Kinder-gartners and first graders can count the amount of time they are read to in their totals). During the two week event, students are encouraged to ask friends, neighbors and extended family to make donations for their reading efforts. The Reading Power packets (reading logs, pledge forms and collected donations) are due February 8, 2019.

## How exactly does my child earn fish scales or sea creatures during the Read-a-thon?

Parents/guardians should initial each line of your child's reading log daily. Your child brings his or her reading log to school to claim paper fish scales or sea creatures. For every 100 minutes read, students earn a scale or sea creature to add to the display at their school. Each school has different dates and times for distributing scales and sea creatures so stay tuned for more instructions from the Reading Power Chair at your school. Parents are encouraged to help with this fun activity. Contact your school chairperson to find out how you can help.

## Are there prizes for participating?

Yes! The class with the highest participation wins a party. Top Fundraisers win prizes and 1000 Minute Club members will earn a prize at the end of the event. Remember, to be considered a participant and to be eligible for any prizes, students must turn in a complete Reading Power packet by February 8, 2019 with at least one donation.

## What is the 1000 Minute Club?

Students who read 1,000 minutes or more during the Reading Power Read-a-thon and turn in the Reading Power packet on time with at least one donation make it into the 1000 Minute Club. 1000 Minute Club members will earn a prize at the end of the Read-a-thon.

## How can our friends and family sponsor my child?

Sponsors can pledge either a flat amount or donate by the number of minutes read by writing a check payable to SchoolForce or donating online at [www.schoolforce.org/donate](http://www.schoolforce.org/donate). Online donations are strongly encouraged, particularly by electronic check or ACH which reduces fees that are charged to SchoolForce. Donors will receive a donation confirmation immediately when donating online.

## Is a Reading Power donation different than my annual School-Force donation?

Yes. While we welcome all donations, SchoolForce encourages parents and students to use Reading Power as a way to get grandparents, neighbors and extended family to make donations for the students' reading efforts. Many friends and family find this the perfect way to encourage your child's academic success and also show they care by supporting your child's school. Parents and guardians should still make their suggested donation of \$1500 per child (or as much as they can afford) during the school year ending June 30, 2019.

## Matching makes a big difference!

Many companies have a matching gift program that can increase and sometimes double your donation to SchoolForce. It's an **easy way to increase your donation!** For more information about corporate matching, and to see if your employer matches donations, see [schoolforce.org/donate](http://schoolforce.org/donate) or email [matching.support@schoolforce.org](mailto:matching.support@schoolforce.org).

## How much does Reading Power raise for our schools?

Last year, Belmont-Redwood Shores students read 2.6 million minutes to raise \$400,000 to support their schools. Those funds are helping to support literacy programs, sizes, science, music, technology, sports, counselors and more.

For more information, contact your school's Reading Power Chairperson or email: [readingpower@schoolforce.org](mailto:readingpower@schoolforce.org)



**READING POWER**  
A SchoolForce Program

